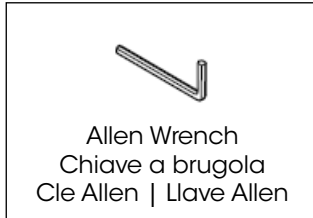


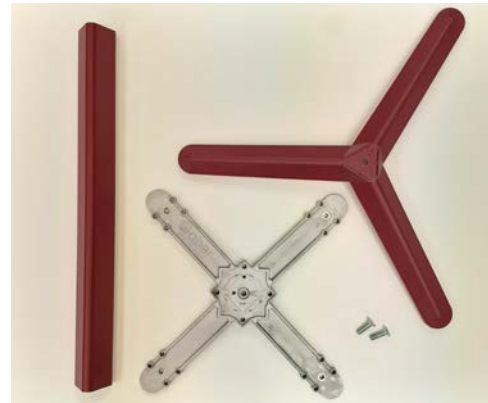
ARKET 3

Assembly Instruction

TOOLS

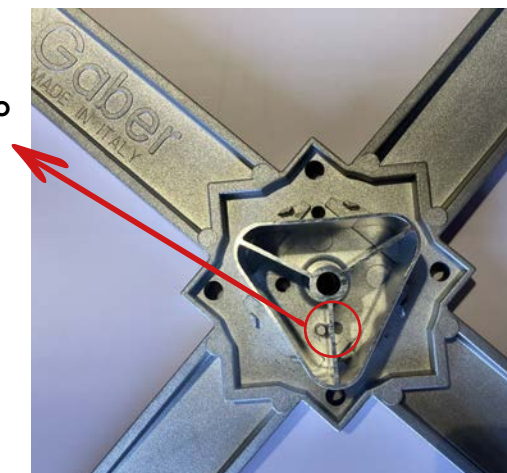
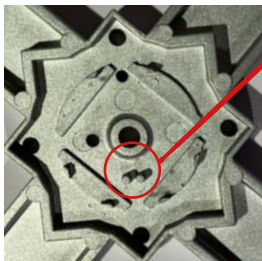


1. Arrange the Components
Disporre i Componenti



2. Fix the column over the cross, inserting the column-rib between the two pins in the cross. Tighten the screw on the top | Fissare la colonna sopra la crociera, inserendo la nervatura della colonna tra i due piolini della crociera. Avvitare la vite (1pc M10x35)

Two pins = rib in the middle
Due piolini = nervatura nel mezzo



ARKET 3

Assembly Instruction

3. Place the column over the base then tighten the screw with the knurl washer (1pc M10x35)
Posizionare la colonna sopra la base e avvitare la vite con la rondella zigrinata (1pz M10x35)



4. Place the frame over the table top and then tighten the screws (4pcs 6x18)
Posizionare il telaio sopra il piano del tavolo e avvitare le viti (4pz 6x18)

